

Necta ASTRO to TOUCH upgrade kit

Brochure and installation manual





TABLE of content

- 1 Introduction..... 3
- 2 What is in the box, tools needed..... 4
- 3 Installation..... 5
 - 3.1 Unplug the machine from the power mains 5
 - 3.2 Disassembly of the door 5
 - 3.3 Installation of the Display..... 6
 - 3.4 Installation of the power supply..... 8
 - 3.5 Make electric shock protection tests 9
- 4 Programming 10
 - 4.1 General information 10
 - 4.2 Programming/custom fitting 11
- 5 Troubleshooting- Cleaning the screen 12
- 6 Disclaimer 13

1 Introduction

This product is an upgrade kit for Necta Astro machines, and including all hardware and software to replace the physical button of the Necta Astro to a Touch Screen.

The display does not interrupts to the machine's software, just replacing the physical buttons do digital ones, connect to the machine via the button cables

The display is very easy to install (takes around 30 minutes),

The display is fully customizable and very easily: by replacing –jpeg files: Languages, background, buttons, info screens.

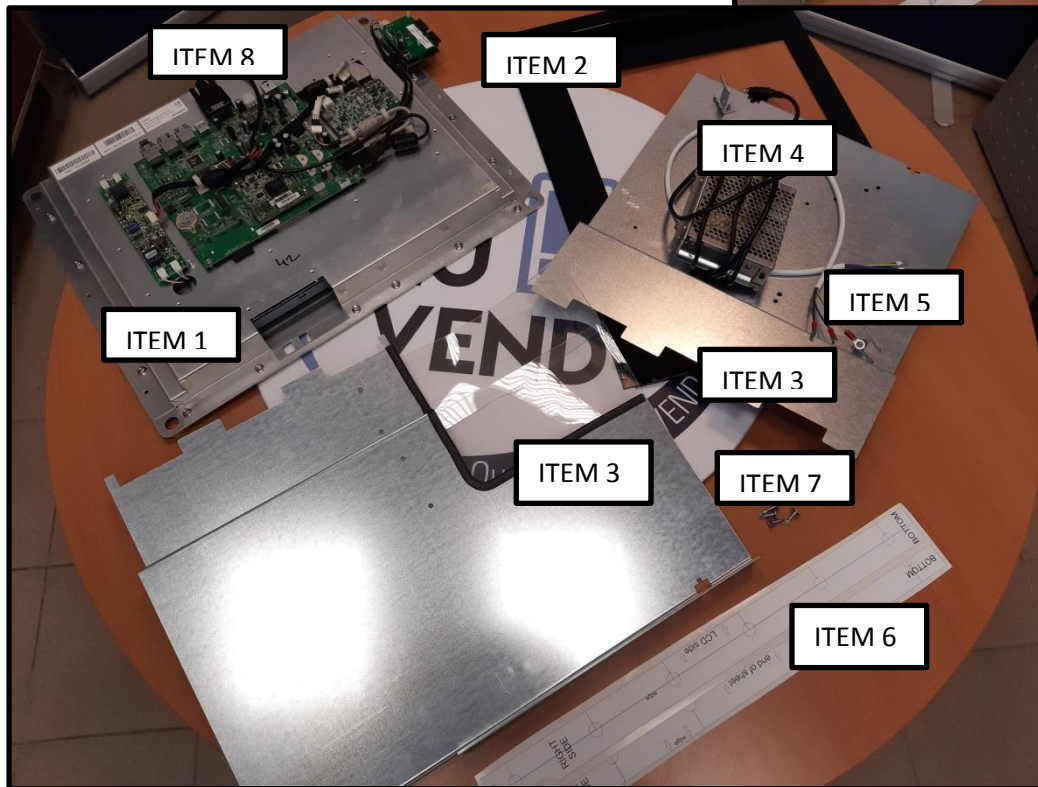
The monochrome display of the Astro stays on place, this display replaces the physical keys.



2 What is in the box, tools needed

What is in the box?

- Display (item 1)
- Display mounting kit (item 2)
- Door back panels (upper and lower) (item 3)
- Power supply unit (item 4)
- Power supply cable (item 5)
- stickers (Item 6)
- Screws (item 7)
- SD CARD (item 8 is inserted into the display)



Tools needed:

- Screwdriver
- rasp or drill
- paper scalpel
- Computer with paint and SC card slot

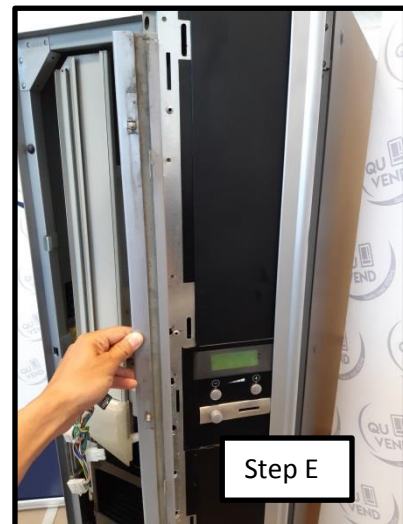
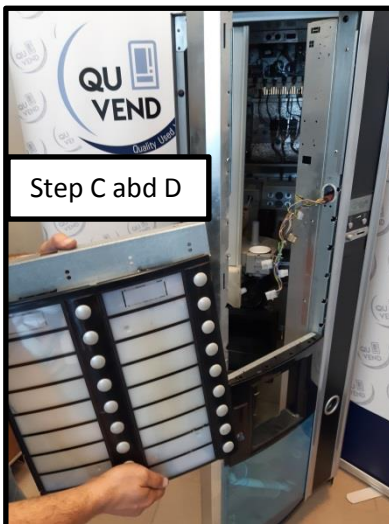
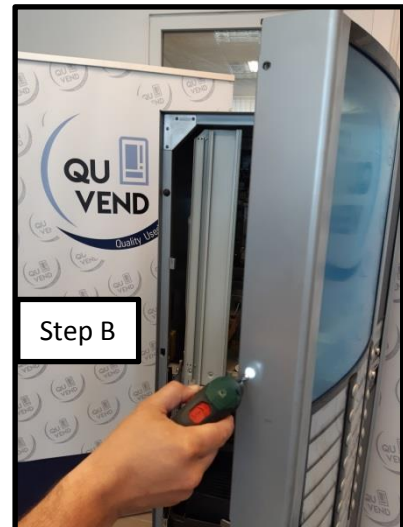


3 Installation

3.1 Unplug the machine from the power mains

3.2 Disassembly of the door

- A. Remove the door back covers
- B. Remove the side door cover
- C. Remove the upper plastic cover
- D. Disconnect and remove the keyboard and the console above
- E. Remove the mid cover
- F. Remove the cup door (this is not going to be replaced)



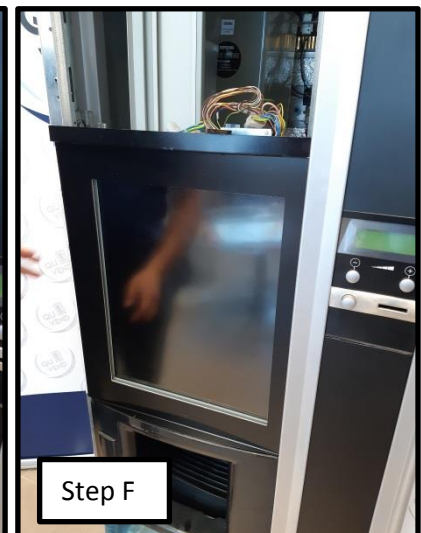
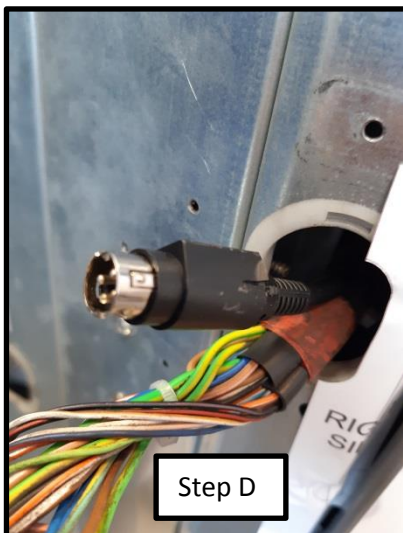
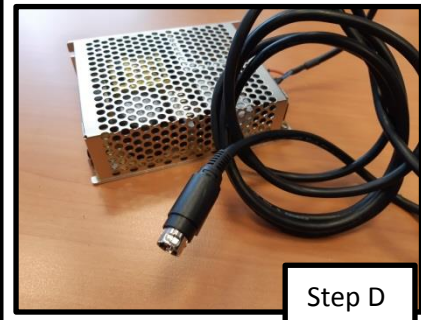
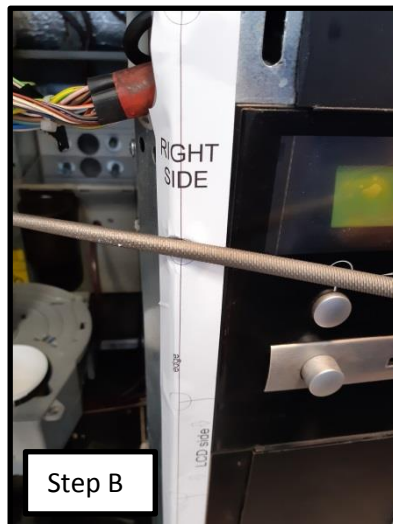
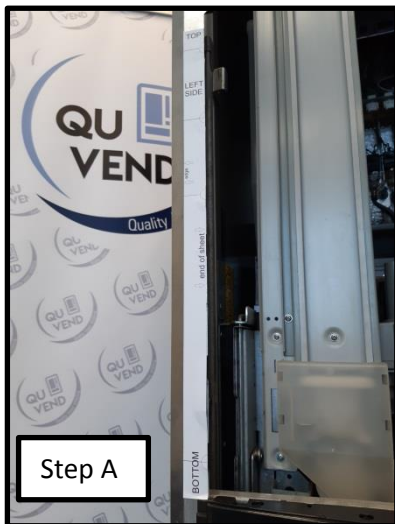
Step B

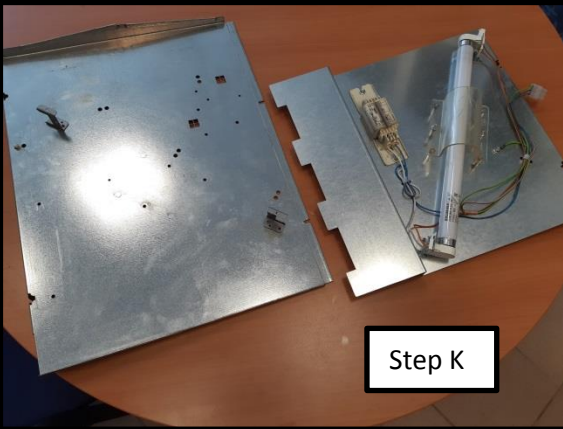
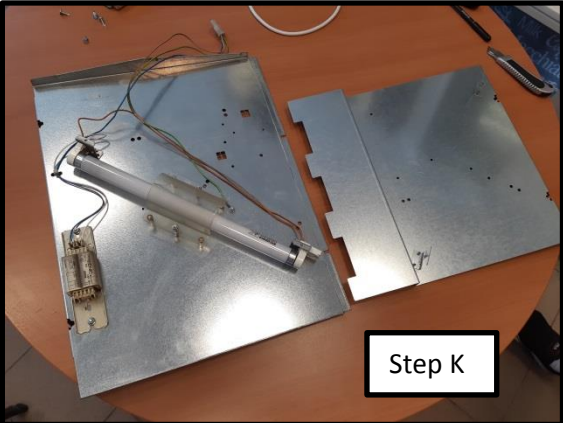
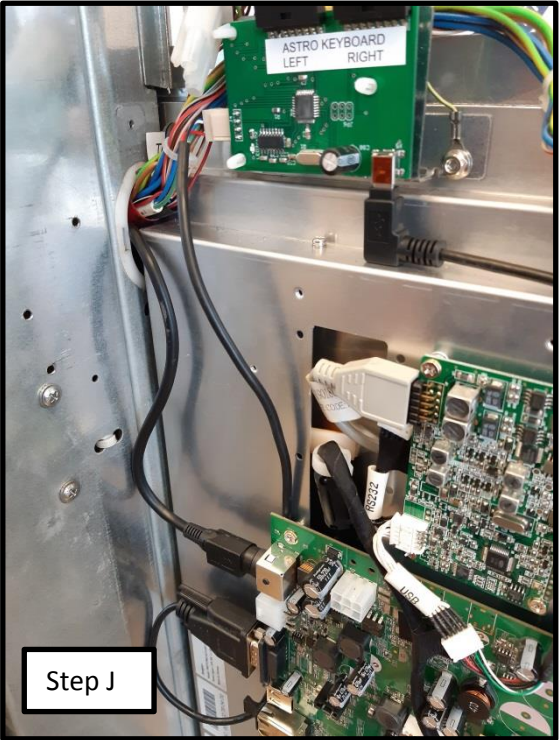
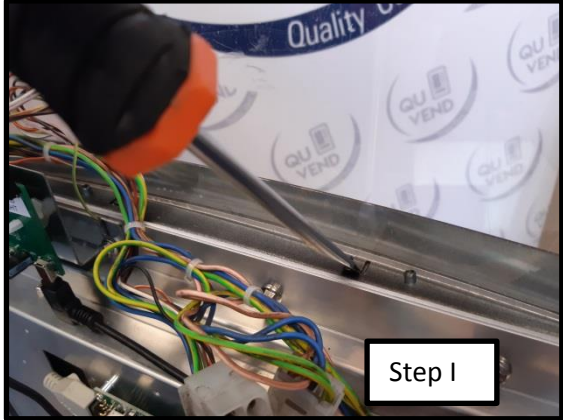
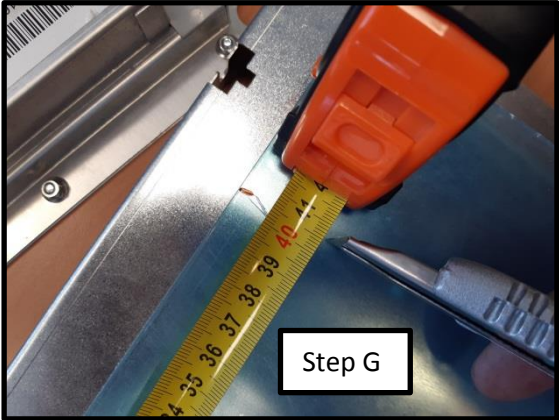
Step C / D

Step E

3.3 Installation of the Display

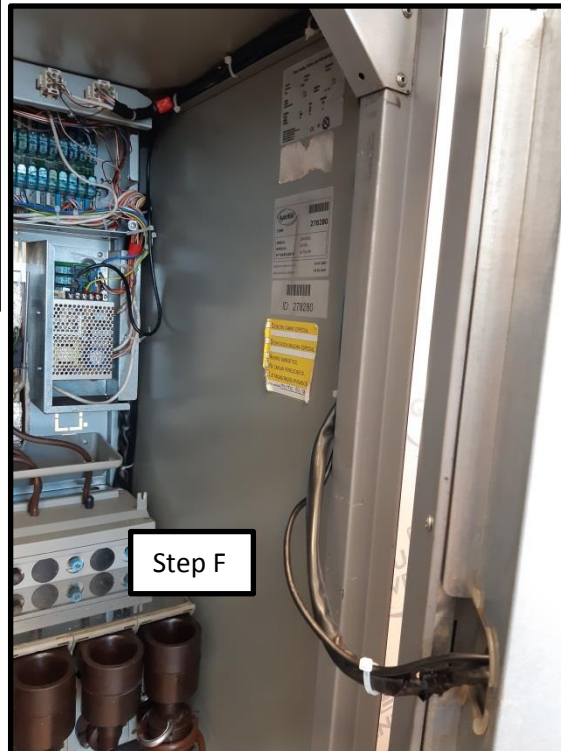
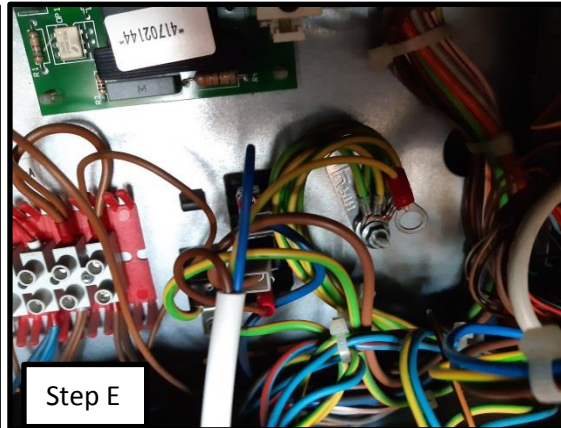
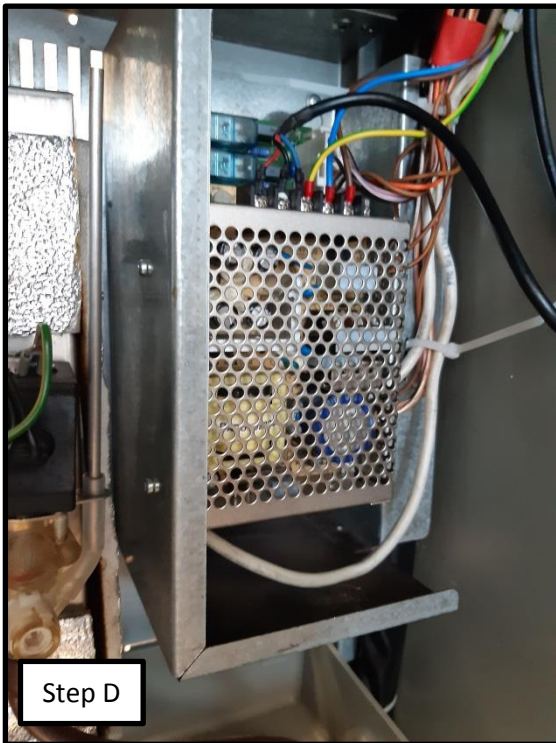
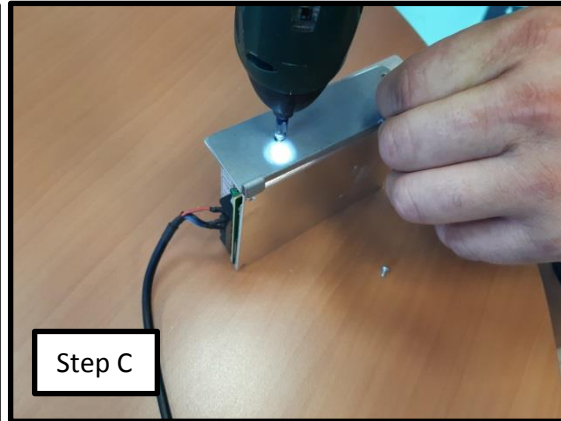
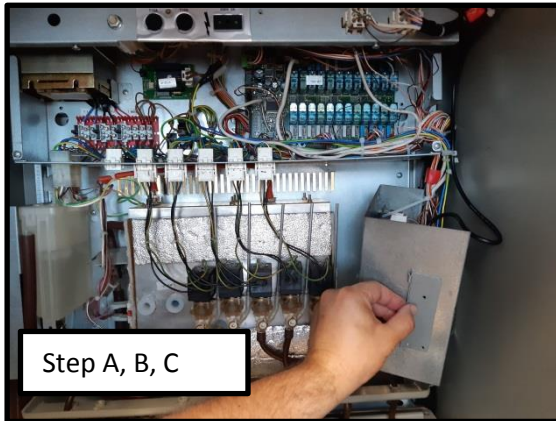
- A. Stick the 2 stickers following the signs on them (Item 6)
- B. Drill or rasp holes where it is marked on the stickers
- C. Replace the mid cover, but keep it loosened
- D. Take the power supply unit (Item 4) and lace the plug over the electric channel (hole) of the mid console
- E. place carefully the display (Item 1)
- F. Place the display mounting kit (Item 2)
- G. Cut the plastic cover to appropriate size (around 405*405mm)
- H. Put the resized plastic cover to its place and fasten it properly
- I. Replace the side cover and also tighten the mid cover bolts
- J. Connect the keyboard cables and the power supply unit to the display
- K. Move the lighting form the old upper back door cover to the new one (Item 3)





3.4 Installation of the power supply

- A. Remove the back panels (behind the canisters) of the Machine
- B. Remove the right hand side metal box
- C. Remove the side plate of the power supply unit (Item 4) and use it as a marker
- D. Mount the power supply unit as it is in the picture
- E. Power the power supply unit
- F. Properly hide and fix the cables
- G. Assembly the machine





3.5 Make electric shock protection tests

One must be a certified mechanic to make the installation and you need to do all of the tests needed.

4 Programming

4.1 General information

We offer 5 different theme. The Themes defines where the buttons are place on the display, but all appearance (background, texts, prices, buttons, desing, languages) can be modified easily by replacing proper –jpeg files

You can find an SD card in your display (Item9). It includes the software started at each booting by the touchscreen and all of the .jpeg files. Please never remove the config.exe and the autoexec.ini files from there.

In the root of the SD card you need to have the config.exe

The program works from the \Storage Card\touchsoft\ folder, you need to have the files you wish to use in this folder.

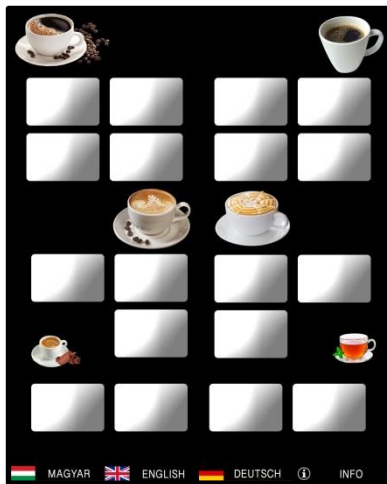
- .exe-the touchsoft template program
- autoexec.bat (with proper calibration),
- logo.jpg (pic at starting),
- \pictures folder the pictures going to appear in the display.
 - You can find here 5 screensaver files (screensaver.jpg) These files are going to activated after 10 minutes and going to change repetitively after 10 seconds
 - You can find in certain themes language .jpeg files
 - You can find an info .jpeg file
 - In sub directories (lang1-3) you can find the language backgrounds (if applies) and the button .jpg files. There are 2 versions of the buttons, unpushed and pushed.

The display is rotated 90degrees from its original position, so all pictures should be also rotated to appear properly.

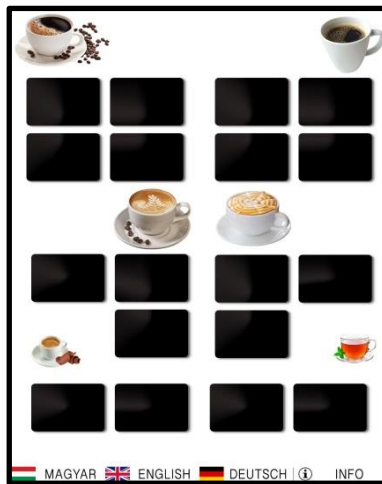


4.2 Programming/custom fitting

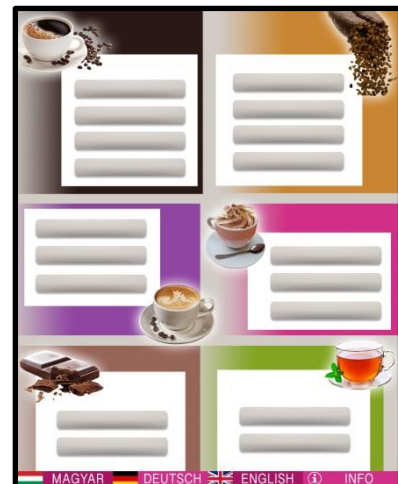
- A. Choose from the 5 themes which you wish to use. Each theme has a folder in the sd card. Now we continue with “touchsoft_v3_Buttons” theme
- B. Copy and replace all files and folders from the selected folder (“touchsoft_v3_Buttons”) to the \Storage Card\touchsoft\ folder
- C. Check that in the \Storage Card\touchsoft\ you have the selected .exe file (in this example touchsoft_v3.exe)
- D. Check the content of the autoexec.bat file in the \Storage Card\. It should be “EXE=”\Storage Card\touchsoft\touchsoft_v3.exe”
- E. Now you can replace the startup Logo in \Storage Card\touchsoft\logo.jpg. WHEN REPLACING ANY JPEG FILE, YOU NEED TO MAKE SURE THAT THE NEW FILE HAS EXACTY THE SAME RESOLUTION (main pictures: 1280*1024) and should be 32bit file. You can easily edit files with MS paint or any other software
- F. You can replace and custom fit complete display, replace all jpg files, all buttons, backgrounds.



V1 Black



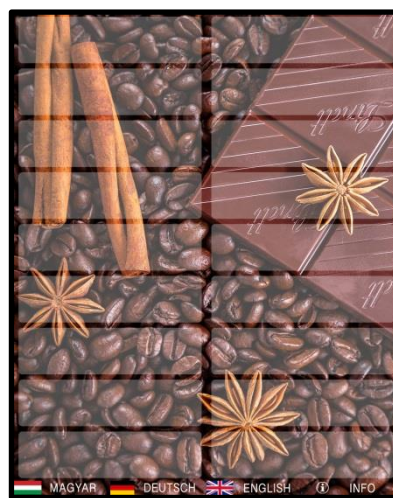
V1 White



V2 Color



V3 Buttons



V3 Image

5 Troubleshooting- Cleaning the screen

Most of the problems are solves

Screen pushed and different button answers: Remove the screen and completely clean it.

Screensaver does not activate or change quickly: Clean the screen.

CLEANING:

- A. Dismount the touch screen
- B. Remove the bolts
- C. Clean the full surface of the screen and the frame



6 Disclaimer

The touch screen is reused, the buyer need to check the quality safeness and conformity of the product at handover.

The product can be cleaned with the same materials as similar electric equipments.

Touch screen needs regular deep cleaning (every 30 days)

The software of the package (excluding MS software) are owned by IVP Zrt, and prohibited to be copied without the approval of IVP Zrt.

Only qualified technician is allowed to installation and especially electrical connections of the kit. Before use of the machine, electric shock protection tests should be made before use the machine.

Warranty

Due to low price, the seller gives 7days replacement warranty after the date of handover, considering this is a used upgrade kit, no further warranty included. The warranty related transport cost is the responsibility of the buyer.

The expressed warranty obligation of the Seller does not cover the following cases:

- The failure of the product is due to unprofessional or improper use, or the Buyer built-in or operates the product in an environment which doesn't meet the requirements expressed in present Fixing and Operational Manual
- Seller or any third party tried to repair or modify arbitrarily the product and/or the connected software without the prior permission of the Seller.
- If the error falling under warranty obligations are due to reasons of force majeure.

Indemnification

Indemnification of Seller shall be governed by the relevant provisions of the Hungarian Civil Code. Parties agree that they maximize the sum of all claims arisen from this contract to be paid by the Seller in the sum of the total Selling price. This limitation of the payable sum of the claims is not applicable for claims stated in the Hungarian Civil Code 6:152.§.

All legal disputes between Seller and Buyer shall be governed by the Hungarian laws, and the jurisdiction is the Seat of the Seller.